

# Solutions for Roof Penetration Protection

We offer pre-built & custom solutions (shown below)  
for every kind of roof penetration challenge







# WE ARE THE LEADER IN ROOF PENETRATION PROTECTION

Having a secure, code-compliant roof pathway is more than just a nice-to-have. It's essential. We're proud to be the industry leader in roof penetration protection. Every part of what we do is engineered to make your job easier & bring peace of mind.

## PARTNERSHIP

We work directly with Architects, Owners & Engineers to help them solve their toughest roof penetration issues. You can use our expertise to make sure your roof is code compliant, warrantied and secured. We can even build custom solutions, made to your exact specifications.

## CONFIGURABLE SOLUTIONS

No matter the problem, we can find a solution. Whether it's something within our existing family of configurable units, or something we design custom for you, there's no problem we can't solve. The VAULT® is more than just a housing. It's an innovative lineup of products & options that work together to make your project more secure.

## PROVEN EXPERTISE

From the very beginning of our company in 2013, we've focused exclusively on making the very best engineered systems for securing roof penetrations. Our products are manufactured in our ISO 9001 facility. We only use the best materials – like welded powder-coated aluminum – and ensure our units are 3rd-party tested to stay current with code requirements.

# Why is the VAULT® the #1 choice for securing roof penetrations?

It's simple. Nothing protects like a VAULT®. Our VAULT® products are engineered from the ground up to deliver protection, flexibility & peace of mind.



## ICC Compliance

All VAULT® AWI models comply with ICC-2015 Section C402.1 Building Envelope Roof Insulation Integrity and (AW) Air Leakage ASTM E2178-13



## Revit Drawings

Easily integrate VAULT® products into Revit with specifications & 3D models available via [roofpenetrationhousings.com](http://roofpenetrationhousings.com) or [bimobject.com](http://bimobject.com)



## 20-year Warranty

Our all aluminum, weather-tight assembly, combined with our watertight Exit Seal brings you the ultimate in roof pathway protection. That's why every VAULT® comes with an insured, 20-Year Warranty\*.



## CAD Files

Download 3D CAD files of all models directly from [roofpenetrationhousings.com](http://roofpenetrationhousings.com)



## Award-Winning Design

From a selection of 43 new roofing products, a panel of industry experts awarded Roof Penetration Housings the "Best New Product."



## Innovative Options

The VAULT® is more than just a housing — it's an innovative lineup of products & options that work together to make your project easy and secure.



## Made in the USA

Every VAULT® is made right here in the USA, using the highest quality components.

\* When installed in accordance with our installation instructions

**BELOW:** The VAULT® AWI Series includes an insulation extension, making it the first product of its kind to meet the ICC 2015 Code for roof insulation integrity.

All-aluminum weather-tight assembly with vandal-resistant screws

SilX14™ Exit Seal inserts handle temperatures up to 475°

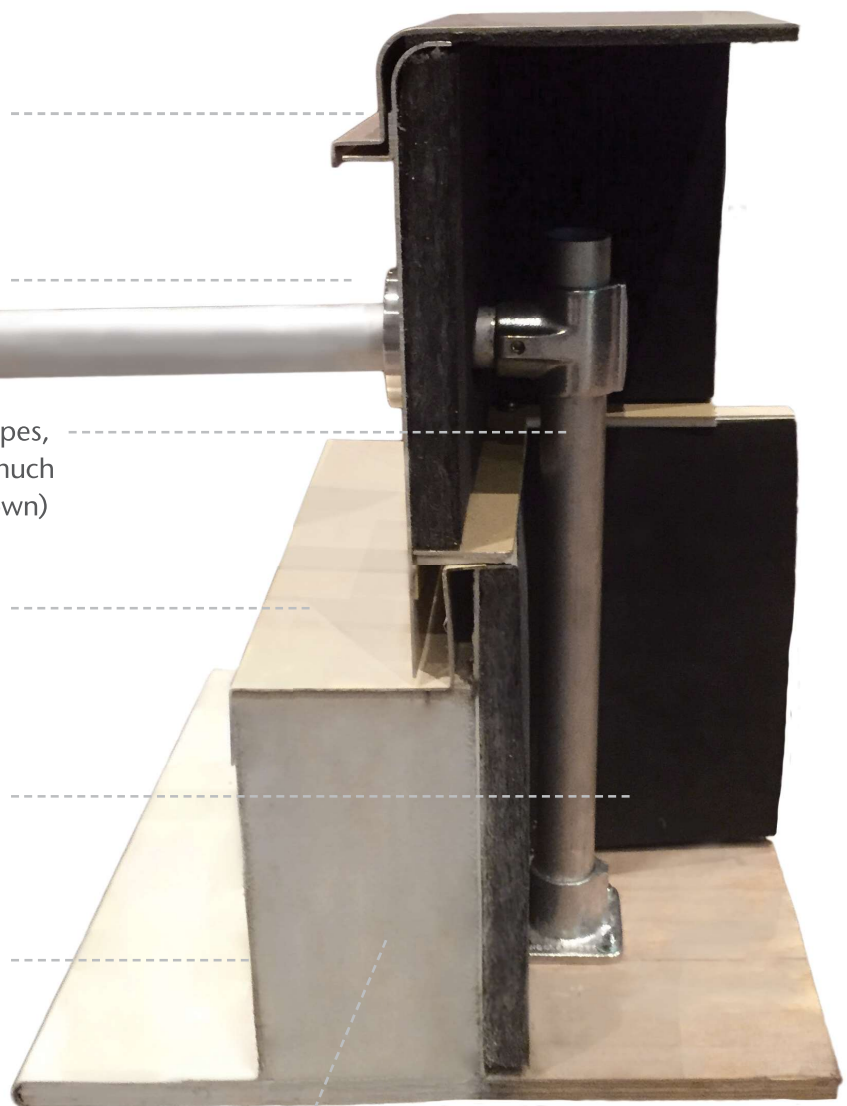
Configurable to accommodate pipes, conduits, telecommunication & much more (SDS and EDS stanchion shown)

VAULT® AWI model includes Curb Extension to meet ICC 2015 code\*

VAULT® interior insulated with R4.3 @ 75F for condensate concerns\*

Exceeds ASTM and FEMA wind ratings and is ICC 2015 ASTM 2178-13 compliant

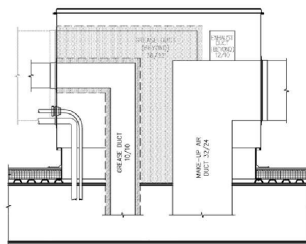
Solar Reflection Index: 88.2\*\*



Optional Insulation Sleeve for use on AWI Model

\* User to determine correct additional amount of insulation required for their application.

\*\*Pictures shown may not reflect current color or latest product iterations.



## VAULT Exit Seals

Lightweight, water-tight & easy to install. Exclusive SilX14 Exit Seal Inserts handle temps up to 475°.

**See Page 12.**

**CUSTOM VAULT®**

Made to your exact design requirements. CAD Drawings are available for all assemblies.  
**See Page 11.**

## Integrated Solutions

Options for Satellite Dish Support, Electrical Supply Box Support, Ductwork & More.  
**See Page 13.**

Wall VAULT®

WV-1017



**Exit Seals:**  
5000 Series  
6000 Series

## Small VAULT®

AWI/AW-161010



**Exit Seals:**  
5000 Series  
6000 Series



### Ductwork (Small)

## Medium VAULT®

AWI/AW-201412



**Exit Seals:**  
5000 Series  
6000 Series  
7000 Series



### Ductwork (Medium)



## Electrical Disconnect



## Satellite Dish Support

Configurations dependent on pipe sizing, radius of sweep and configuration. Please contact us for help.



# Configurable Protection for Every Kind of Penetration

The VAULT® is more than just a housing – it's an innovative family of configurable products designed to give you a safer, more secure roof.

Mini-Tower VAULT®  
AW-121022



Mega VAULT®  
AWI/AW-343424



**Exit Seals:**  
5000 Series



**Electrical  
Disconnect**



**Satellite  
Dish Support**



**Exit Seals:**  
5000 Series  
6000 Series  
7000 Series  
16000 Series



**Ductwork  
(Large)**



**Electrical  
Disconnect**



**Satellite  
Dish Support**

# AWI VAULT®

## Wind-Rated Assembly + Insulated Curb Extension

### Specification

The "AWI" VAULT® model is a 20-year insured, warranted, all-aluminum, multi-penetrant pathway to the roof, air<sup>1</sup> & wind rated and insulation integrity<sup>2</sup> powder-coated heavy gauge aluminum engineered 4-pc. assembly. The "AWI" VAULT® is a configuration of a vandal-resistant lid, middle housing, insulation extension, and flanged curb and is designed to be used with our exclusive SilX14™ aluminum & stainless exit seals. Our exit seals are designed to accommodate appropriate size pipes, cable, ductwork, or other desired penetrants.



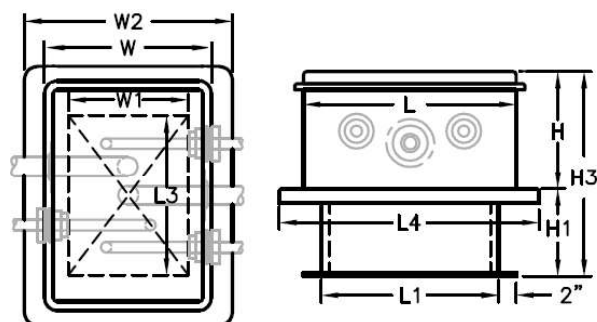
FEMA

<sup>1</sup>All "AWI" VAULTS® are 3rd-party tested to comply with 2015 ICC Energy Code section C402, section ASTM E2178-11.

<sup>2</sup>ASTM E2357-11.



Download Revit Drawings & CAD Models from: [www.roofpenetration housings.com](http://www.roofpenetration housings.com)



### NEW: Curb Insulation Sleeve



The optional Curb Insulation Sleeve (R40) slides onto the curb and fits perfectly within the insulation extension of the AWI Series. This optional insulation sleeve eliminates the need for contractors to provide their own insulation.

MODELS	H	H1	H3	L	L1	L3	W	W1	W2	L4
AWI-161010	12"	14"	26"	16"	14½"	12"	12¾"	5½"	20¾"	28½"
AWI-201412	13¾"	14"	27¾"	21½"	19½"	16½"	14½"	10	22½"	33½"
AWI-343424	25"	14"	39"	34"	32"	29"	34"	29"	42"	36"
Suffix - 18	18" Curb Option – Add 4" to H1 and H3 Dimensions									

Dimensions may vary slightly



# AW VAULT®

## Wind-Rated Assembly

### Specification

The "AW" VAULT® model is a 20-year insured, warrantied, all-aluminum, multi-penetrant pathway to the roof, with air<sup>1</sup> & wind<sup>2</sup> rating, and is a 3-pc. powder-coated heavy gauge aluminum engineered assembly. The "AW" VAULT® is configured with a vandal-resistant lid, middle housing, and flanged curb designed to be used with our exclusive SilX14™ aluminum & stainless steel exit seals. Our exit seals are designed to accommodate appropriate size pipes, cables, duct work, or other desired penetrants.



FEMA

REVIT

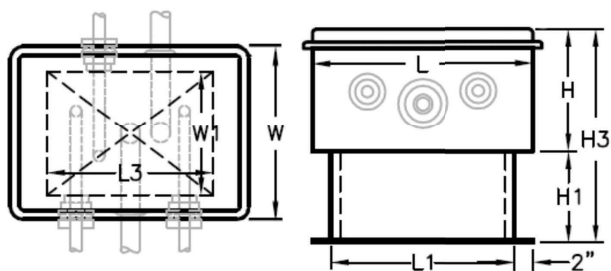
AUTOCAD

Download Revit Drawings & CAD Models  
from: [www.roofpenetrationhousings.com](http://www.roofpenetrationhousings.com)

<sup>1</sup>All "AW" Vaults® are 3rd-party tested to comply with 2015 ICC Energy Code section C402 for air emittance, section ASTM E2178-11.

<sup>2</sup>ASTM E2357-11.

<sup>3</sup>3rd party wind tested to ICC-500 & FEMA 320/361



MODELS	H	H1	H3	L	L1	L3	W	W1
AW-121022	23"	14"	38"	12"	10"	7½"	13"	5¼"
AW-161010	12"	14"	27"	16"	14½"	12"	12¾"	5½"
AW-201412	13¾"	14"	28¾"	21½"	19½"	16½"	14½"	10"
AW-343424	25"	14"	40"	34"	32"	29"	34"	29"
<b>Suffix - 18</b>	18" Curb Option – Add 4" to H1 and H3 Dimensions							

Dimensions may vary slightly

# Wall VAULT®

## Protection for Wall Penetrations

### Specification

"WV" VAULT® Model is a 20-year insured, warranted, engineered product constructed of heavy gauge powder coated welded aluminum with gaskets and stainless steel hardware. The three-piece configuration, consisting of a removable vandal-resistant panel, frame for mounting onto various wall types and to be used with our exclusive two-piece aluminum and/or stainless steel flanged Exit Seal with SilX14™ gasket which comes with 20-year insured warranty. Allows for the electrical, cable, refrigeration lines, etc. to penetrate through a parapet or exterior wall. The Wall Vault® also allows for future penetrants if need be.



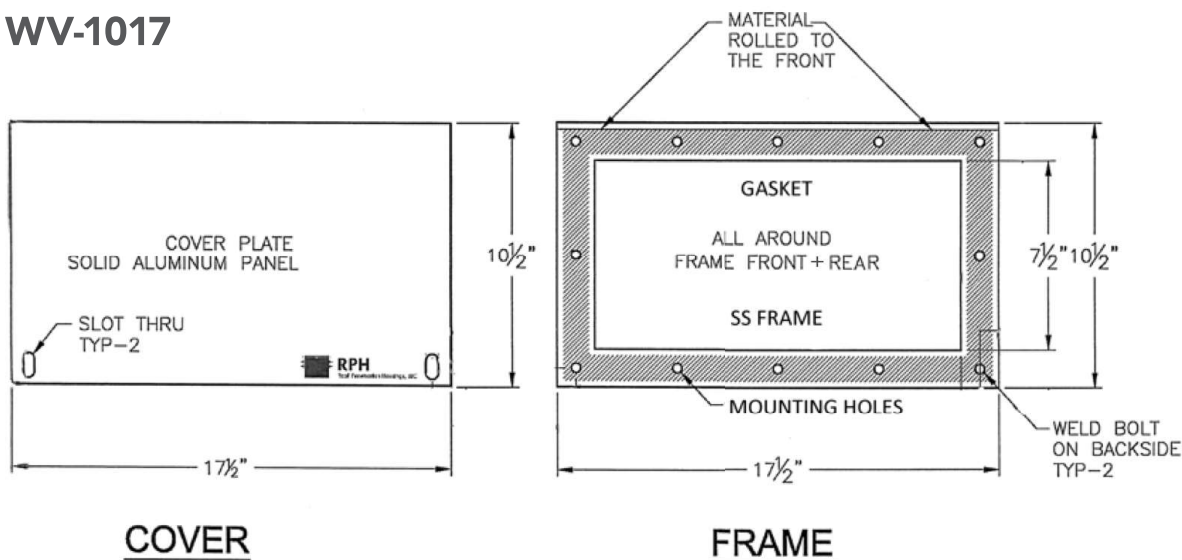
PATENT PENDING



Download Revit Drawings & CAD Models  
from: [www.roofpenetrationhousings.com](http://www.roofpenetrationhousings.com)

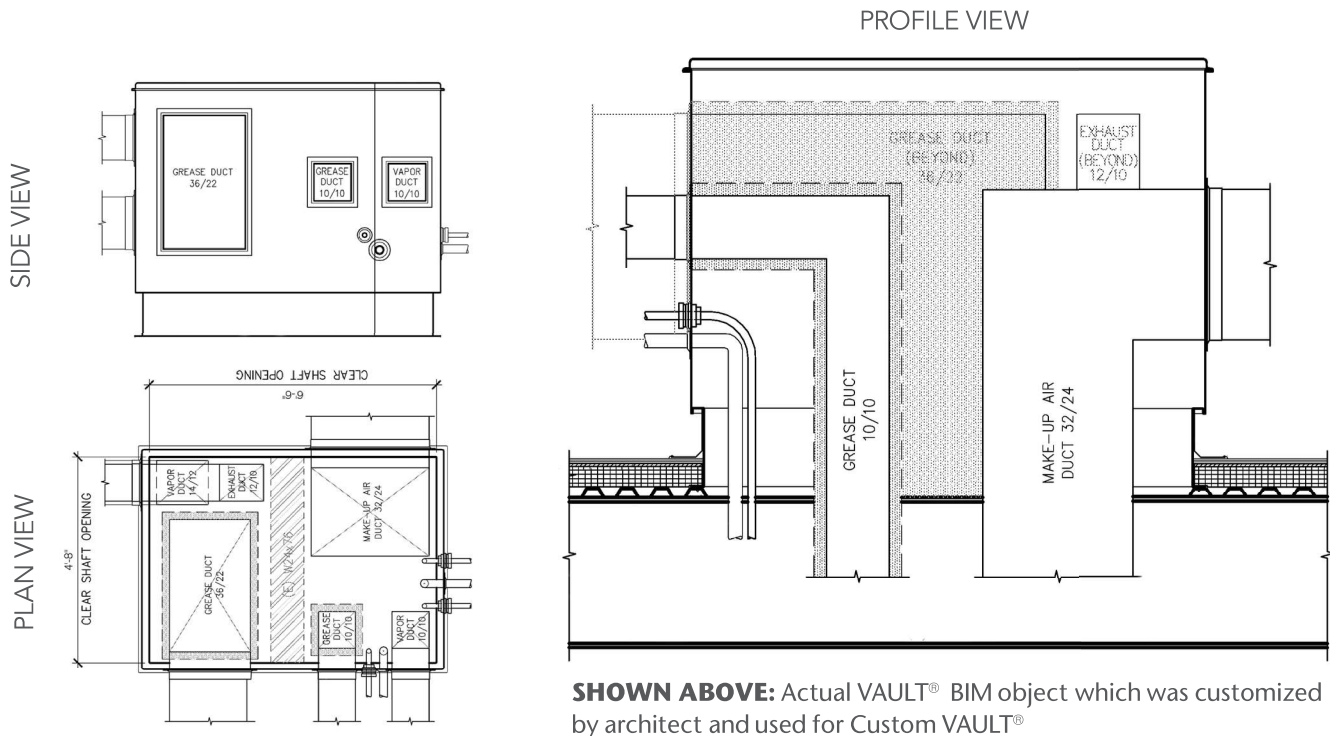
**CUSTOM SIZES AVAILABLE**

### WV-1017



# Custom VAULT®

Legendary Protection Made to Your Exact Needs



**SHOWN ABOVE:** Actual VAULT® BIM object which was customized by architect and used for Custom VAULT®

## Custom Sizes

We take our basic foot print and expand it to meet your exact job requirements. No job is too large. We've produced Custom VAULT®'s as large as 12ft.

## Plug & Play Solutions

We've built solutions for Grease Ducts, 90° Exhaust ducts, High Temperature Piping, Air Conditioning Ducts, & More. Depending on shipping, some assembly may be required.

## Revit Drawings

Use our BIM objects from [roofpenetrationhousings.com](http://roofpenetrationhousings.com) or [bimobject.com](http://bimobject.com) and customize directly in Revit to build your perfect solution.

## Custom Colors & Materials

VAULT® housings are available in both stainless steel and aluminum. We can also deliver custom colors or decals.

Call us at **1-800-994-0945** to tell us about your project needs and get started on a custom VAULT®



# Exit Seals

Our Exclusive Lightweight, Watertight Seals

## Specification

Exit Seals are of an aluminum or stainless steel configuration, utilizing the exclusive VAULT® SilX14™ gasket seal, designed to accommodate the appropriate size of pipe, cable, or desired penetrant. The SilX14™ gasket is rated for -25°F to +475°F.



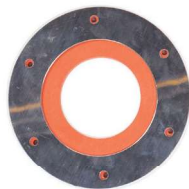
## Types of Exiting Material

Almost any type of penetrant material can be used as long as it is single line. Bundled penetrant materials should be sleeved or separated. Majority of penetrant materials used are copper ACR, Copper type L or K, steel pipe, PVC pipe, electrical rigid and EMT, aluminum, liquid-tight, and cables.



### 5000 Series

All aluminum body.  
Threaded connections.  
0.25" OD to 1.90" OD



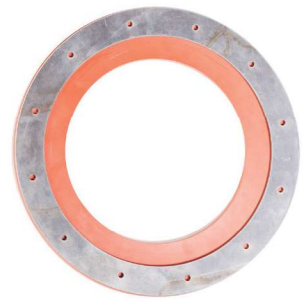
### 6000 Series

Stainless steel flange.  
2.15" OD to 3.125" OD



### 7000 Series

Stainless steel flange.  
3.50" OD to 4.50" OD



### 16000 Series

Stainless steel flange.  
6.325" OD to 15" OD

Duct, vent, electrical disconnects and hydrants are also available.

# VAULT® Options

Innovative Solutions for Roof Penetrations



## Curb Insulation Sleeve (R40)

An optional insulation sleeve for use with AWI Models.



## Electric Disconnect Support

Used in combination with The VAULT® to support electrical supply boxes up to 500 lbs.



## Satellite Dish Support

Used in combination with The VAULT® to support satellite dishes 40" diameter or less.



## Cable Guides

Allows the contractor to pull telecommunication fiber optics or bundled wiring without the use of long radius elbows.



## Ductwork Option

Ductwork 90 ° elbow for penetration through the roof in conjunction with Mega or Custom VAULT®.



## Hose Bib

Non-freeze type for equipment cleaning convenience.

# Gallery



CUSTOM VAULT® with Ductwork, Electric & Chilled Water



CUSTOM VAULT® with 300°F High Temp Lines



MEGA VAULT® with Master Built Chilled Water Line Sets



AW VAULT® with Satellite Dish Support



See More Examples at [www.RoofPenetrationHousings.com](http://www.RoofPenetrationHousings.com)



Grocery Chain - Conduit and Chiller Lines



Gas Piping and Conduit Lines



Custom VAULT® – Hospital Data Center – Electrical Conduits



# 1-800-994-0945

[www.RoofPenetrationHousings.com](http://www.RoofPenetrationHousings.com)

The VAULT® is the leading roof penetration housing system, trusted by Architects, Owners & Engineers all around the world to solve their toughest roof penetration challenges.

We're committed to designing and manufacturing an innovative solution that works best for you and your project.

PO Box 461024

San Antonio, TX 78246

United States



**7475 S. MADISON ST #4  
WILLOWBROOK, IL 60527  
630-655-1795  
[sales@contractors-express.com](mailto:sales@contractors-express.com)**

